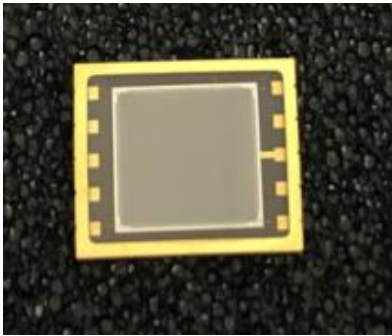


Two-dimensional PSD



Description

Tetra-lateral position sensing detector PSD100-IC is Manufactured with one single resistive layer for both one And two dimensional measurements. It feature a Common cathode and four anodes for this two dimensional Position sensing.

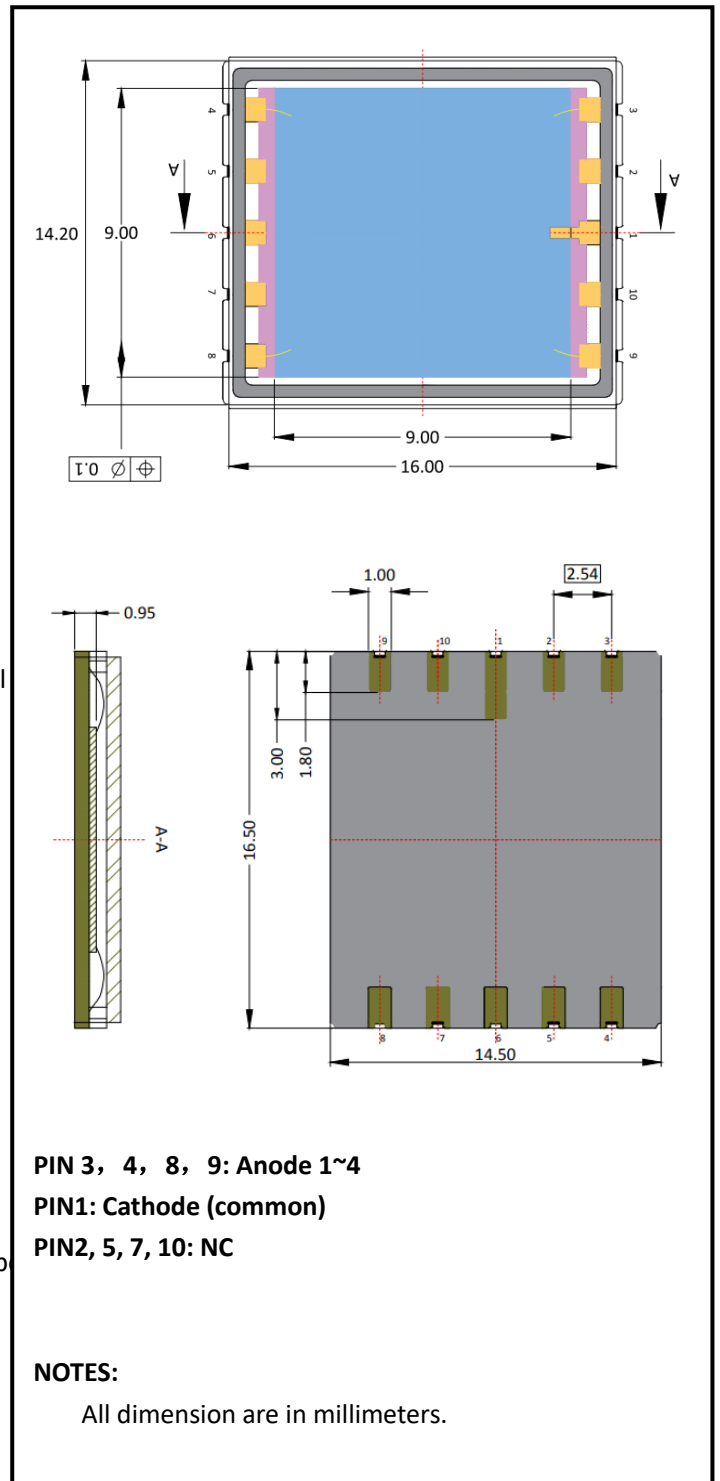
It offers high response uniformity, low dark current, and Good position linearity over 80% of the sensing area.

Features

- * High responsibility for IR laser.
- * High speed response
- * Low dark current
- * High dynamic range
- * Operating temperature is from -40 to +80°C
- * Storage temperature is from -40 to +100°C
- * soldering temperature is 260°C @Max.5 seconds at the p

Applications

- * Tool alignment and control
- * Leveling measurements
- * Angular measurements
- * Automatic range finder systems
- * 3 Dimensional vision



Information in this technical datasheet is believed to be correct and reliable. However, no responsibility is assumed for possible inaccuracies or omission. Specifications are subject change without notice

OTRON ELECTRONIC TECHNOLOGY CO., LTD

TEL:+86-21-54971821

FAX:+86-21-54971823

Email: otron.sensor@gmail.com

[Http://www.e-otron.com](http://www.e-otron.com)

Absolute Maximum Ratings (Ta=25°C)

Parameter	Symbol	Condition	Min.	Typ.	Max.	Unit
Sensor Type			Pincushion Tetra Lateral Senaor			
Wavelength Range	λ		400-1100			nm
Sensor Size(active area)	A		9X9			mm ²
Recommended Spot Size			$\phi 0.2-\phi 7.2$			mm
Absolute Position Detection Error(mm)		$\lambda=900\text{nm}, V_R=5\text{V},$	150			μm
Position resolution	ΔR	$I_o=1\mu\text{A}, B=1\text{KHz}$	1.5			μm
Incident power density	Ist	$V_R=5\text{V} R_L=1\text{K}\Omega$	10			mw/cm ²
Interelectrode Resistance	R	$U_{br}=0.1\text{V}$	7			k Ω
Temp. Range	Te		-40~+80			°C
Dark current	I _d	$V_R=5\text{V}$		1	50	nA
		$V_R=15\text{V}$		5	50	
Breakdown voltege	U _{br}	$I_R=10\mu\text{A}$		100		V
Rise time	t _r	$V_R=15\text{V}, 650\text{nm}, 50 \Omega$		1		μs
Junction Capacitance	C _j	$V_R=5\text{V}, f=1\text{MHz}$		50		pF
		$V_R=15\text{V}, f=1\text{MHz}$		10		
Photo sensitivity	S _R	$\lambda=650\text{nm}$		0.45		A/W
		$\lambda=900\text{nm}$		0.58		

Coverision Formula:

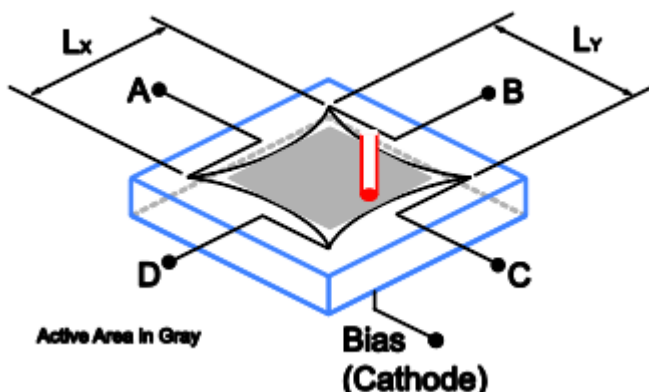
$$\Delta x = (A + D) - (B + C)$$

$$\Delta y = (A + B) - (C + D)$$

$$SUM = (A + B + C + D)$$

$$x = Lx(\Delta x) / 2 SUM ;$$

$$y = Ly (\Delta y) / 2 SUM$$

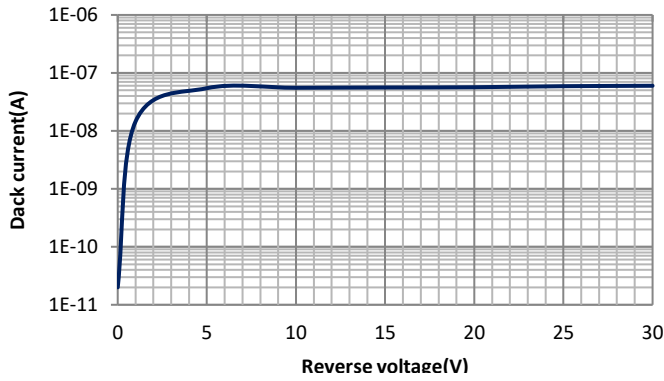


Information in this technical datasheet is believed to be correct and reliable. However, no responsibility is assumed for possible inaccuracies or omission. Specifications are subject change without notice

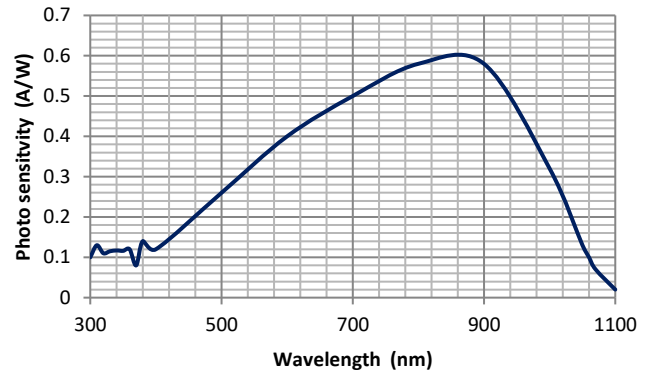


PSD100-IC

■ Dark current vs. reverse voltage

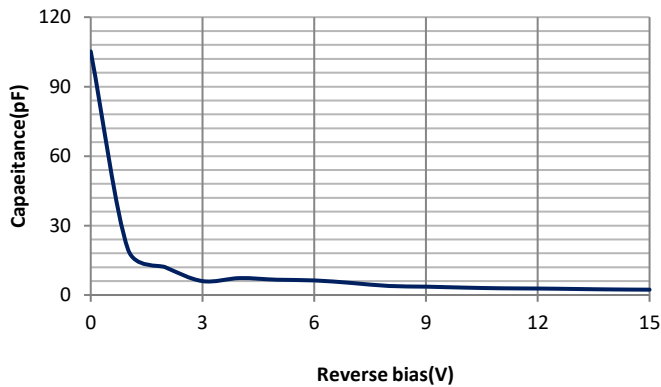


■ Spectral response



■ Relative Junction Capacitance

VS. Voltage



Information in this technical datasheet is believed to be correct and reliable. However, no responsibility is assumed for possible inaccuracies or omission. Specifications are subject change without notice

OTRON ELECTRONIC TECHNOLOGY CO., LTD

TEL:+86-21-54971821

FAX:+86-21-54971823

Email: otron.sensor@gmail.com

[Http://www.e-otron.com](http://www.e-otron.com)